

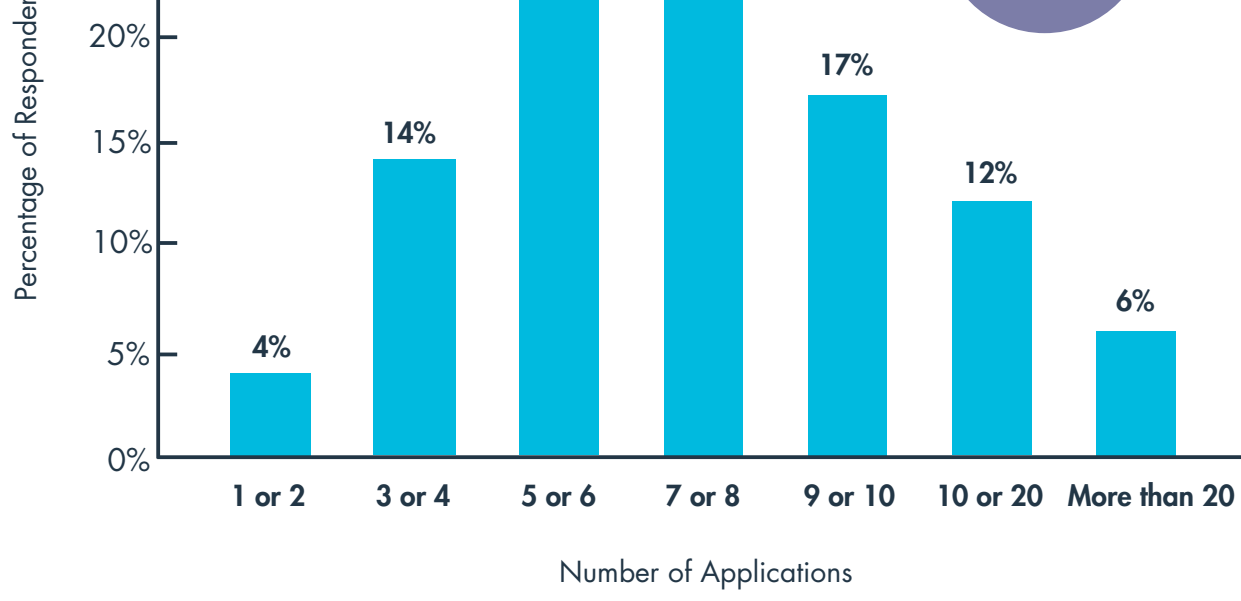
PKI AT THE CROSSROADS

October 2017

A RECENT SURVEY FOUND THAT WHILE ENTERPRISES CONTINUE TO FORTIFY THE SECURITY OF THEIR PUBLIC KEY INFRASTRUCTURES (PKIs) TO MEET CURRENT DEMANDS, THEY ARE ALSO PREPARING FOR THE GAME-CHANGING NEEDS OF THE INTERNET OF THINGS.

Enterprises are increasingly dependent on their existing PKIs

How many distinct applications does your PKI manage certificates on behalf of?



The top five applications that use PKI credentials



SSL/TLS



VPN



PUBLIC CLOUD APPLICATIONS



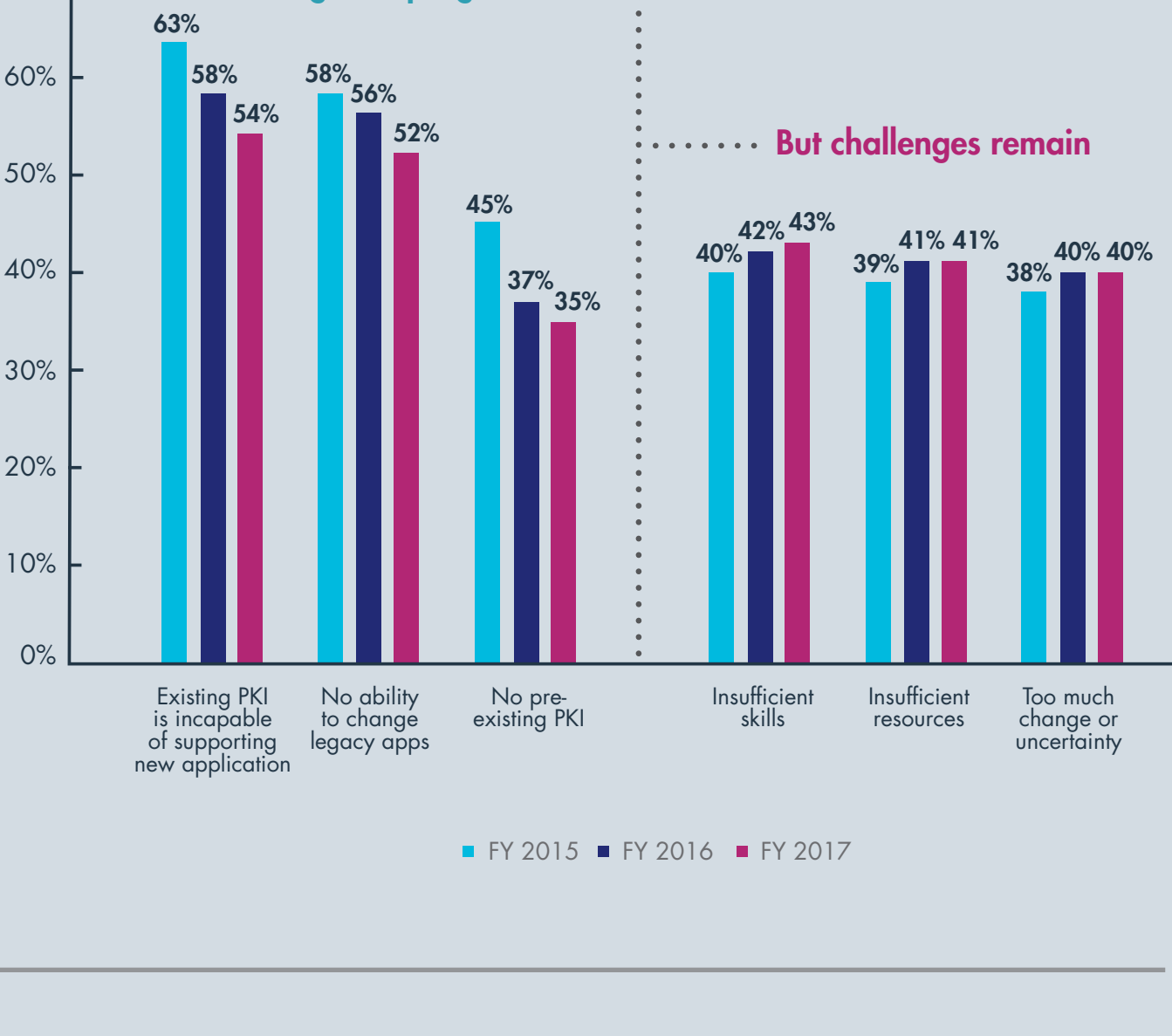
DEVICE AUTHENTICATION



EMAIL

Ongoing challenges to enable applications to use PKI

Signs of progress, but challenges remain

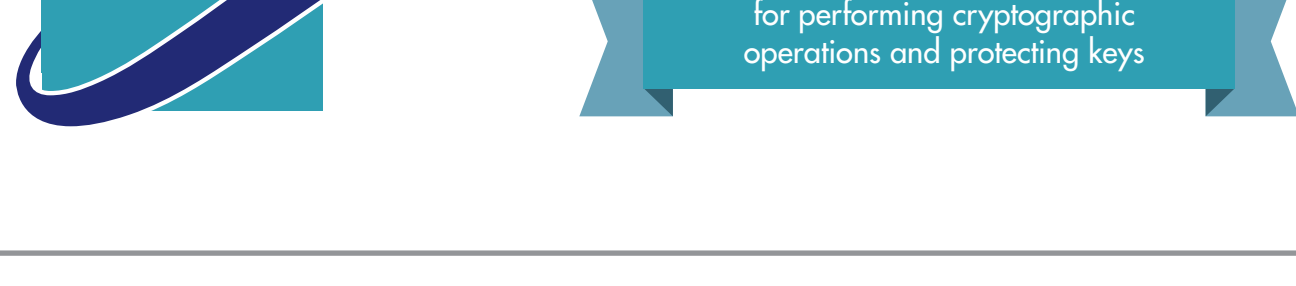


69% of respondents cite lack of clear ownership as the top PKI issue

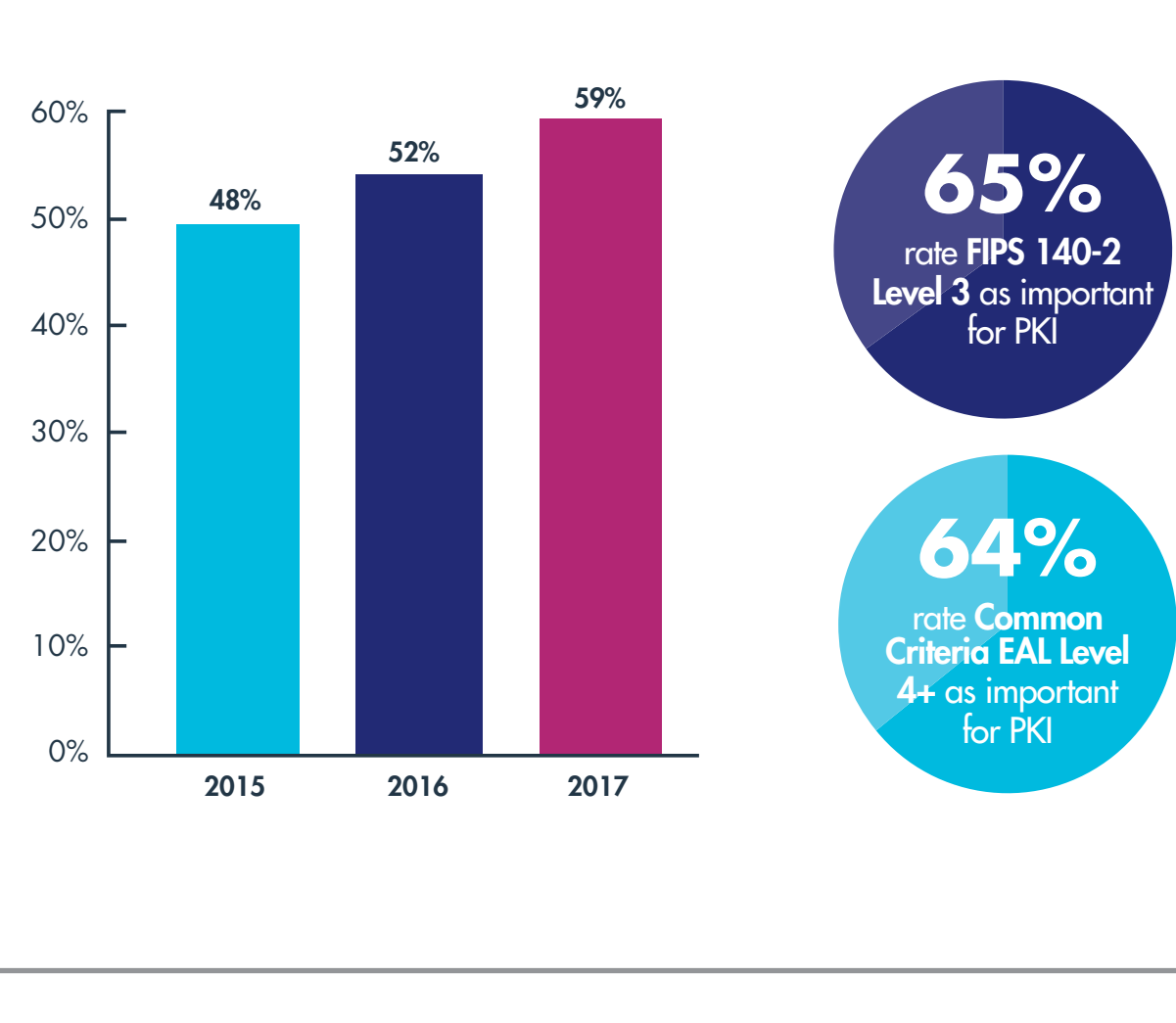
only 43% of respondents employ full-time PKI specialists

The security posture of PKIs improves

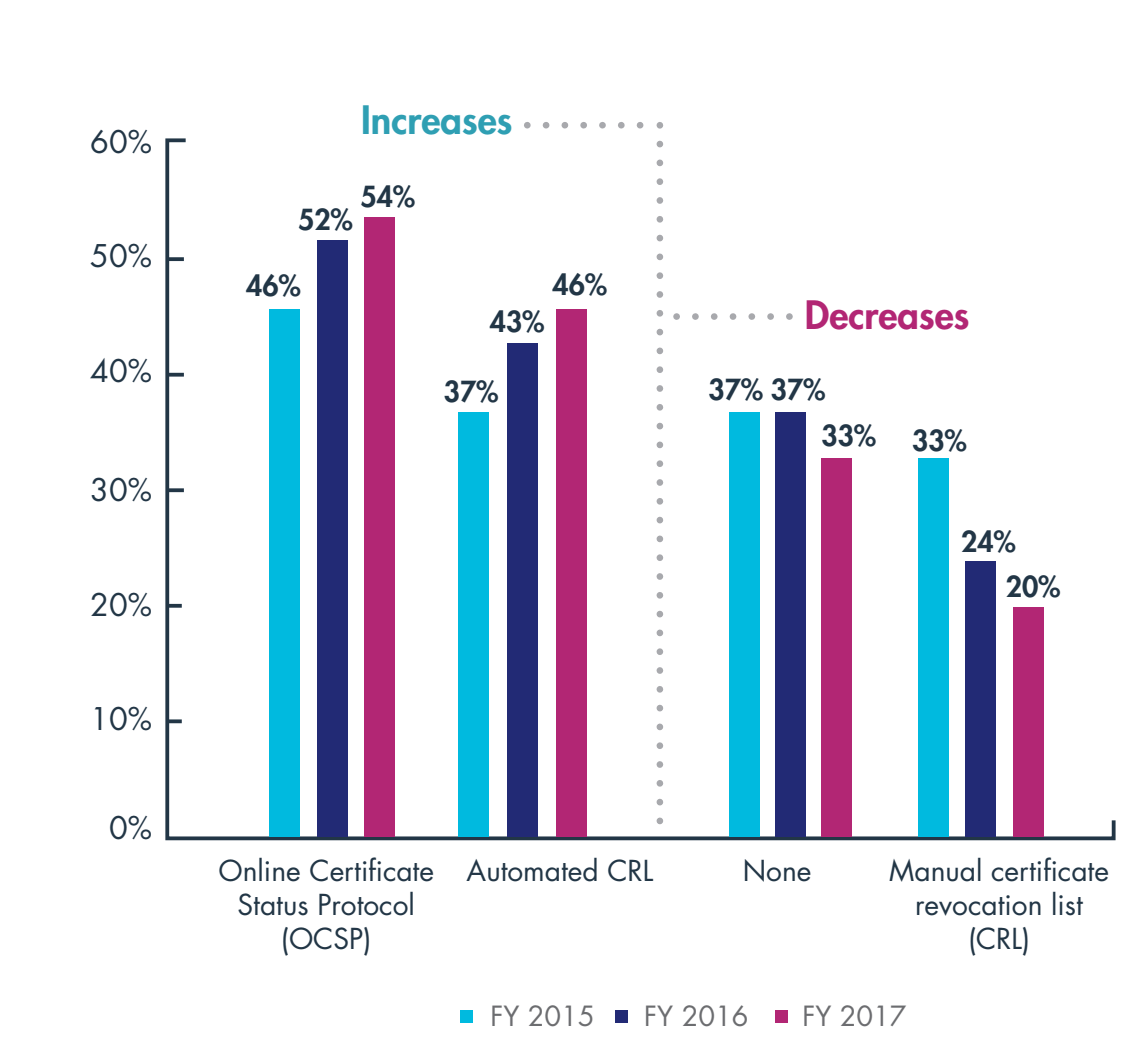
HSM (HARDWARE SECURITY MODULE) USE FOR ROOT/ISSUING/POLICY CERTIFICATE AUTHORITIES IS UP 4% OVER 2016



USE OF MULTIFACTOR AUTHENTICATION FOR ADMINISTRATORS IS UP



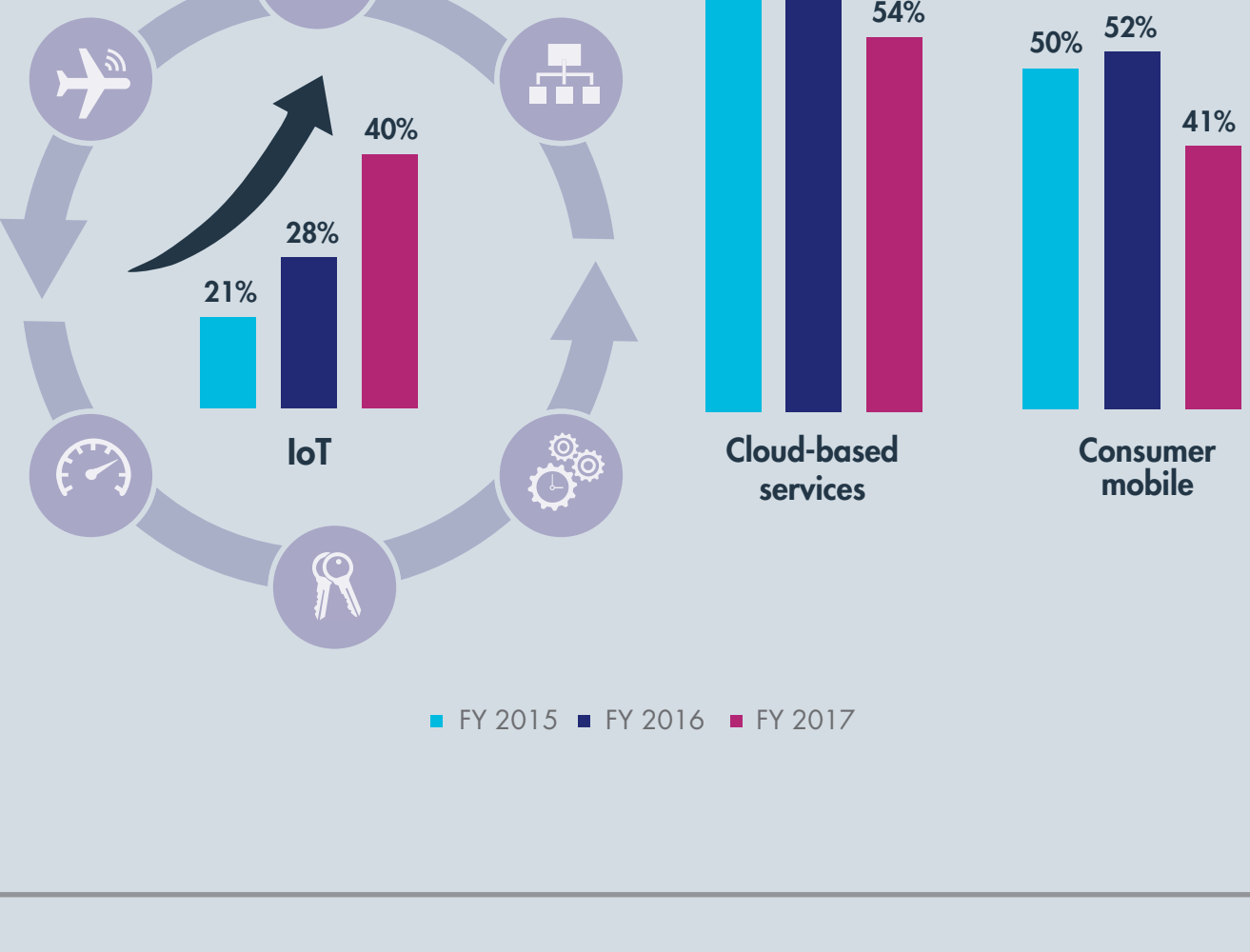
THE CERTIFICATE REVOCATION TECHNIQUES USED IN ENTERPRISES



- Conclusions:**
- Automated CRL methods increase
 - Manual CRL methods decrease
 - Fewer respondents have no revocation technique at all

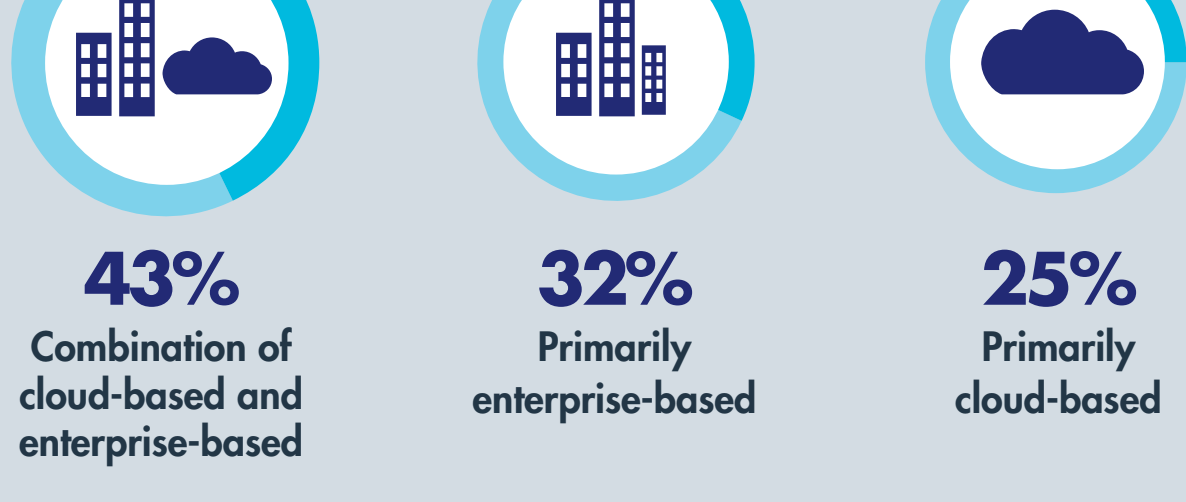
The Rise of the Internet of Things (IoT)

The IoT is the fastest growing trend driving the deployment of applications that use PKI.



43% of IoT devices in use will use digital certificates for identification/authentication in the next two years.

HOW WILL PKI BE DEPLOYED FOR IoT DEVICE CREDENTIALING?



[CLICK TO DOWNLOAD REPORT](#)

FOLLOW US ON:

